

Matala®
"Make water alive"

Pond Vacuum II

the Muck Buster

Pond Maintenance Made Easy

2 H.P.



- Collection container with motor casing and 5 m (16 ft) cable.
- 2.5 m (8 ft). discharge hose with integrated blocking flap.
- 5 m (16 ft).suction hose, hose and piece, 5 extension tubes.
- 3 adjustable floor nozzles (for particle size 2, 5, 10 mm). (for particle size 1/10",.1/5",3/8")
- Sludge collection bag.
- Operation instructions.
- The vacuum feet (Please see picture 9,10).

Safety instructions Power connection

- Only operate the device when no people are in the water!
- Before reaching into the water always unplug all devices located in the water.
- Only operate the device from an outlet that has been installed in accordance with directions.
- Compare supply voltage (V) and supply frequency (Hz) of your power source with the data on the nameplate. These data must agree.
- Ensure that the device is protected via a residual current protective circuit with a rated residual current of maximum 30Ma. Please consult an electrician!
- For safety plug the vacuum into an electrical outlet with a (GFCI) Ground Fault Circuit Interrupter.
- Electrical installations for garden ponds must satisfy the international and national building determinations.
- Do not carry or pull the device by the connecting cable!
- Keep the power plug and all connection points dry!
- The device may not be operated if cable or casing is defective! Please consult your dealer or a specialized workshop.

Assembly

1. Loosen the container clamps and remove motor casing. Take all parts out of the collection container.
2. Replace the motor casing and lock the clamps.
3. Insert the suction hose end into the upper opening of the collection container and lock by turning lightly to the right. (Please see picture 2)
4. Attach the extension tubes (number as required) and fit a suitable suction nozzle. (Please see picture 5,6)
5. Insert the open end of the discharge hose (the end of the hose without one way flapper Please see picture 3) into the lower discharge opening of the collection container. (Please see picture 4) The hose end with one way flapper should be away from the vacuum at farthest point. (Please see picture 7)

Setup

1. Set up the vacuum near the pond. The minimum clearance to the edge of the pond is 2 m (6.5 ft) for safety reasons. The device should be set up as close to water level as possible. Make sure the device is standing firmly.
2. Lay the discharge hose in such a manner that the sludge water is conducted into shrubbery or grassy area during draining. Lay the discharge hose flat on the ground (if possible with a slight incline downward).
3. Fasten the sludge collection bag on the end of the discharge hose as needed (for example when suctioning hair algae) (Please see picture 8), so that the cleaned water, if necessary, can be returned to the pond.
4. Connect the device to the mains power.

Operation

1. Insert one of the supplied nozzles (for particle size 2, 5, 10 mm). (for particle size 1/10", .1/5", 3/8")
2. Turn on the device using the main switch at the motor casing.
3. Vacuum up the sludge with slow and even movements. Keep the vacuum hose below waist level for best performance. When the collection container has reached its maximum liquid level, the vacuum will shut off automatically for 25 seconds.

The one way flapper at the end of the discharge hose (Please see picture 2338) will open and the sludge runs out of the collection container. After 25 seconds the vacuum will turn on automatically again and the cleaning of the pond can be continued.

4. After use turn off the vacuum at the main switch.

Maintenance and repair

Please observe the safety instructions.

For the most part, the vacuum is maintenance-free. After use, merely rinse out the collection container and the sludge collection bag and clean the foam filter.

1. Switch off the Vacuum Cleaner using the main switch and unplug the power plug.
2. Remove all hoses and the motor casing.
3. Rinse the collection container with the garden hose until there is no more residue in it.
4. Pull the foam filter off and wash it out with garden hose water. The same applies for the sludge collection bag.

Attention! Never use the vacuum without the foam filter!

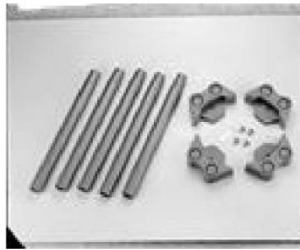
5. Always check the float for ease of movement.

Operating instructions

This device has been developed with special consideration of technical safety standards.

Nevertheless, the following instructions must be complied with to use the device safely:

- The minimum clearance to the edge of the pond is 2 m / 6.5 ft. for safety reasons.
- The device may only be used for suctioning deposits on the pond floor. The device may only be implemented for private use-.
- Never vacuum up flammable or toxic liquids like gasoline, copy machine toner or other volatile substances.
- Never vacuum up acids.
- Never use in the presence of explosive liquids or fumes. The device is not explosion protected.
- Never vacuum up asbestos or asbestos dust.
- Never vacuum up hot or smouldering ashes, smouldering cigarette butts or similar objects.
- Never vacuum up dirt, such as dust, sand or similar things.
- Never make technical changes to the device.
- Only use original replacement parts and accessories made for the Matala Pond Vacuum II.
- Only have the device repaired at authorized customer service locations.
- Do not operate the device in the rain or leave it standing in the rain.



Rated Voltage	AC 120V / 60Hz
Power consumption	1400 Watts
Container capacity	20L. / 5Gals.
Water release time	25 sec.
Suction hose length	5M. / 16Ft.
Discharge hose length	2.5M. / 8Ft.
Cable length	5M. / 16Ft.



- Turn yellow ring on handle to open air vent.
- Use finger to adjust air flow.

Suction Adjustment Ring

- To extend vacuum time turn yellow ring on handle to open vent.
- Hold Finger over vent when increased suction is needed.
- Release finger when less suction is needed.

IE: To vacuum heavy particles, place finger over the hole

Trouble shooting

1. Take out and Check the filter sponge.



2. Using the clean water to wash the filter sponge gently and keep dry.



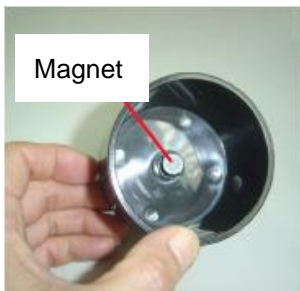
3. Put back the clean and dry filter sponge. Before put the sponge back please check the floating switch under the motor head was stock by small rock or other items.



4. Take out these 4 screws in the picture.



5. Check the magnet position in the float (have loosening or not).



6. If the magnet position OK, take in these 4 screws.



7. Install the filter pad. check the floating switch under the motor head was stock by small rock or other items.



8. Assembly OK for head part.



Process of Replace Pond Vacuum Magnetic Switch

A. Disassembly pond vacuum:

1. Upside down the vacuum and remove 4 screws of filter frame.



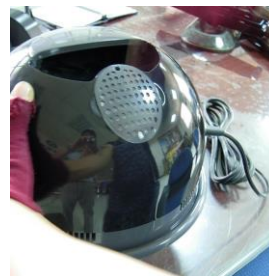
2. Take out the filter frame.



3. Take out 4 screws of motor foundation.



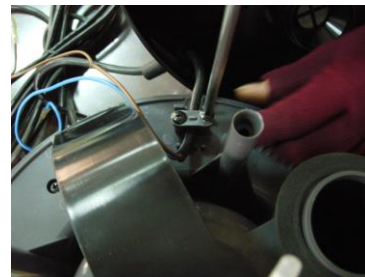
4. Turn the vacuum back and remove the black semicircle cover.



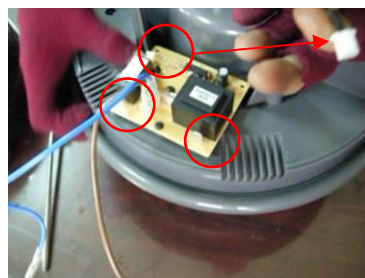
5. Disconnect all the electric cable on switch.



6. Remove the cable holder and take out power cord.



7. Disconnect the magnetic switch cable and motor cable.



8. Pull the motor cover up and pull out the motor cables (thick one). Cut off the magnetic switch cable and pull them out (thin one).



9. Take out the motor, gasket and magnetic switch.



10. After take out the motor, gasket and magnetic switch.



B. Install magnetic switch:

1. Put the magnetic switch into the chamber of vacuum casing.



2. Put the gasket into the chamber of vacuum casing (Black or light yellow color).



3. Install the motor in vacuum casing and be sure the motor position is same as figure.



4. Thread the motor cable and magnetic switch cable through the middle casing.



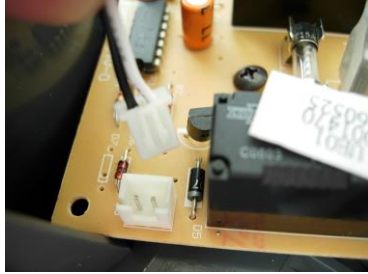
5. Recover the middle vacuum cover.



6. Connect the motor cable with printed circuit board terminal.



7. Connect the magnetic switch cable with printed circuit board terminal.



8. Connect the power cord and printed circuit board cable with power switch terminal.



9. Recover the semicircle cover.



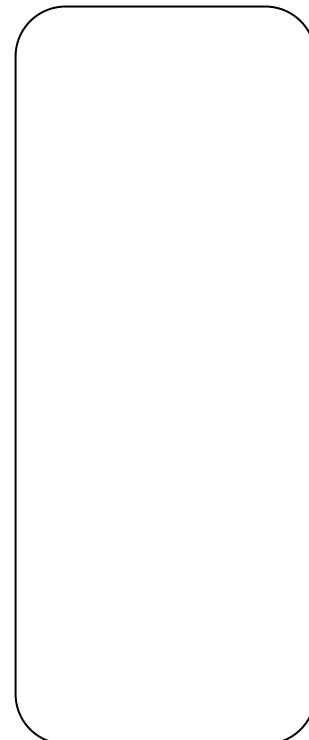
10. Upside down the vacuum and turn the screw to tighten it.



11. Reinstall the filter frame and flat and turn the screw to tighten it.



DISTRIBUTED BY



20121031

MATALA WATER TECHNOLOGY CO., LTD.
www.matala.com.tw